

PROJECTDOX

Component Installation Quick Reference Guide

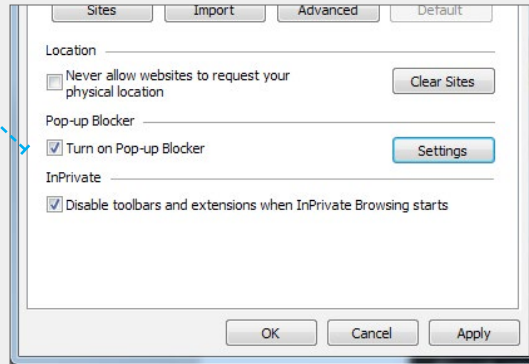
1. Pop-Up Blocker

ADJUST SETTINGS

ProjectDox requires the use of pop-up windows. Open the browser's *Internet Options* window, and select the *Privacy* tab.

There are two options available to adjust the settings:

1. Turn off the pop-up blocker entirely by unchecking the box, or
2. Configure the pop-up blocker by clicking the *Settings* button and adding all ProjectDox websites.



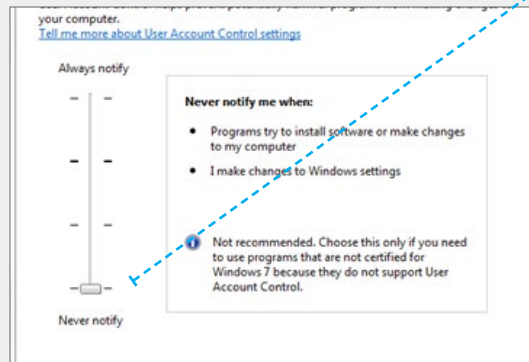
2. UAC

DISABLE CHANGE NOTIFICATIONS

From the *Control Panel* window, open *User Accounts*.

For Windows 7, select the link for *Change User Account Control Settings*. Click and drag the slide control to *Never Notify*.

Select OK and restart the computer to make the changes take effect.

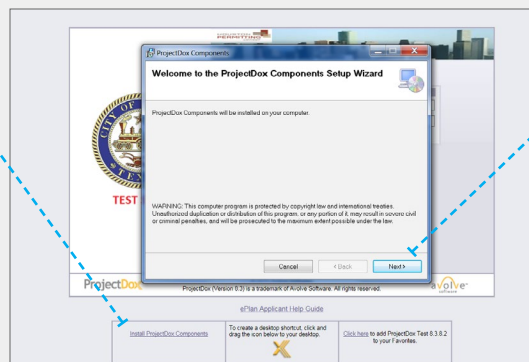


3. ActiveX Control

DOWNLOAD AND INSTALL

ActiveX control is needed to perform four actions: uploading files, downloading files, viewing files, and viewing help information.

Open the ProjectDox login page, and click on the *Install ProjectDox Components* link located at the bottom of the page. Depending on your browser, select *Save* or *Run* the downloaded MSI components.



4. Install MSI

SET UP WIZARD

Open the downloaded MSI file and run the set up wizard. Follow the default settings.

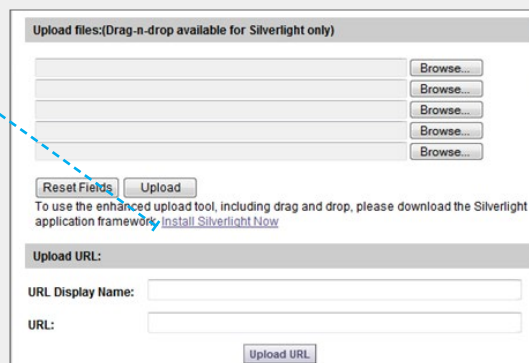
If user's network requires Administrative access to download ActiveX control, the MSI file will not install. Contact your network administrator for assistance.

5. Add Silverlight

OPTIONAL

Batch upload capability is available with the installation of Silverlight.

Uninstall any previous versions of Silverlight. Click on the *Install Silverlight Now* link and follow the default instructions. Hit *F5* on your keyboard to refresh the page and make the changes take effect.



Tip

USER ACCOUNT CONTROL

Settings may be restored to normal after proper installation of components and the four main actions are each completed once in ProjectDox.